

Index

Package Contents.....	1
System Requirements.....	2
The Description for Each Part.....	3
Camera Features.....	4
Install the Software.....	5
Install the Hardware.....	8
Setting the Software.....	9
Uninstall the Software.....	16
Q&A.....	17

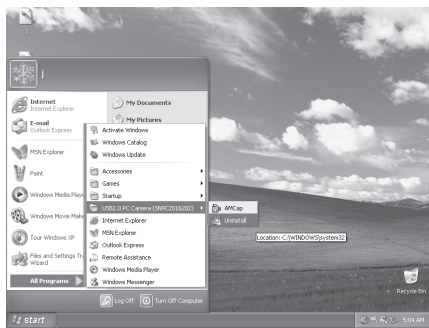
Q&A

Q: If you reverse the step of installation or you meet some problem during installation, please take the following resolution.
A: Please pull out the USB cable of Web Cam first and take the correct step for installation.
Step 1: Please install the driver first.
Step 2: Please install the Web Cam after finishing the installation of driver successfully.

Thank you for purchasing a quality Rosewill® Product.
Please register your product at : www.rosewill.com/
for complete warranty information and future support for your product.

Uninstall the Software

1. Click "Start" from the task bar and choose "Programs"
2. Select 1.3 Mega Pixel Web Cam-->"Uninstall" and follow the instructions.



Package Contents

- True 1.3 Mega Pixels Web Camera with USB 2.0 cable
- CD Driver
- User's Manual

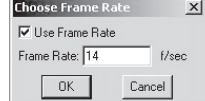


System Requirements

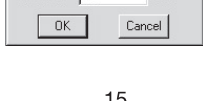
- Windows 98SE/ME/2000/XP/VISTA or Mac OS X Above
- Pentium P4 1.4 GHz or AMD Athlon Processor 1 GHz
- 128MB RAM
- 200MB free hard drive space
- CD-ROM drive
- 24 bit color display adapter
- Available 1.1 or 2.0 USB port (USB 2.0 high speed port required for mega pixel image capture)

Setting the Software

- Capture/Start Capture: Save the capture file in your computer and select "START" and then "OK" to start capture of video sequence or "Cancel" to cancel the capture.
- Capture/Set Frame Rate: Where you can set the frame rate you want for preview and video.

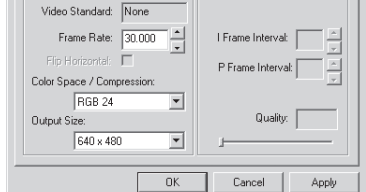


- Capture/Set Time Limit: Where you can set the time limit for video.



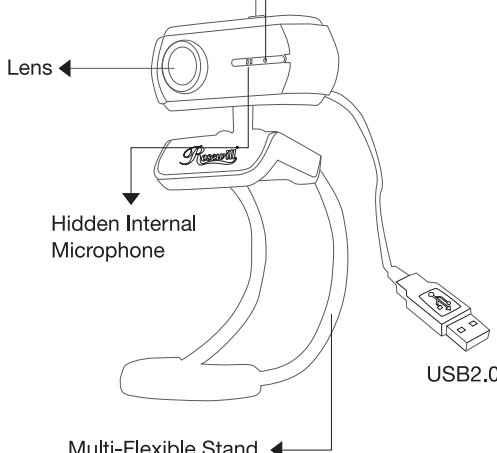
Setting the Software

- Options/Video Capture Pin: Choose the video color space and video size. Supported color spaces are RGB24, 1420. Supported size is 160X120, 176X144, 320X240, 352X288, 640X480, 800X600, 1024X768 and 1280X1024.



- If no selection of preview for 1280X1024 in your OS, please download and install Office Web Components (OWC) from Microsoft.

The Description for Each Part



Web Camera Features

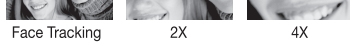
Multi-Flexible Stand



Multi-Swivel Design



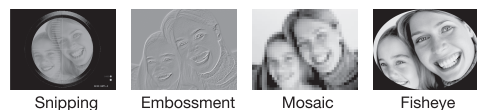
Face Tracking



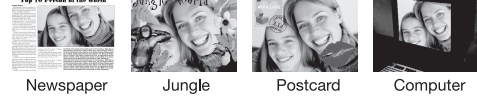
Setting the Software

Unique Video Effect

1. Particular Video Effect : There are 16 kinds of video effect for choosing.

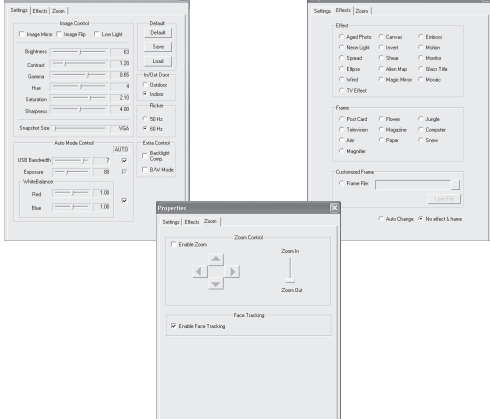


2. Special Frame Effect : There are 10 kinds of frame effect for choosing.



Setting the Software

- Options/Video Capture Filter: Adjust various video setting, such as brightness, contrast, etc.



Install the Software

Install the software **FIRST** and follow the on-screen instruction.

Attention: Please install the driver before the Web Cam installation.

- The Steps of installation:

Steps 1: Please install the driver first.
Steps 2: Please install the Web Cam after finishing the installation of driver successfully.

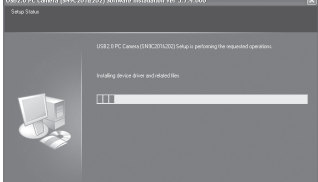


Install the Software

1. Click "Install" to begin the installation

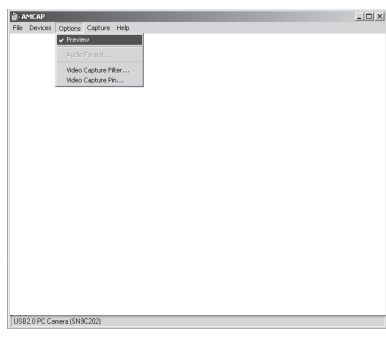


2. Start installation



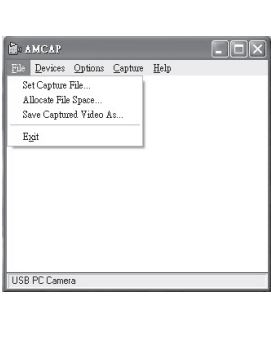
Setting the Software

- Options/preview: let you watch the input video that is being recorded in the application window.



Setting the Software

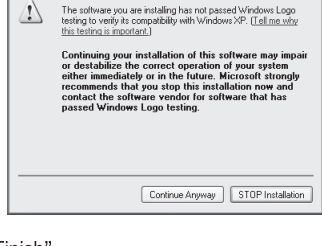
- File/Save Captured Video As : Use this to copy the captured data to another file, so you can reuse the same preallocated file for your next capture.



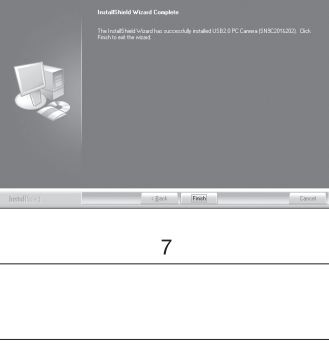
- Device : Under the devices menu you choose which of your video cameras you will be capturing from.

Install the Software

3. Select "Continue Anyway"



4. Select "Finish"



Install the Software

Connect the camera USB cable to the USB port.



Setting the Software

How to use AMCAP tool :

AMCAP is an application that let you capture video in your system. It captures video to an .AVI file. Below is a description of AMCAP's various options and features.

- File/Set Capture File : where you save the captured file.
- File/Allocate File Space : capturing will work better if you capture into an .AVI file that already exists on your local drive. Here you set how much space to reserve (how big your file needs to be). It also helps if you defragment your hard drive before beginning capture, and have capture file near the beginning of the physical drive.